

AutoReplace

A Lightroom Plug-in

User Guide

Version 1.1

Tile Barn Photographic

www.tilebarn.com

Last updated: June 2012

Contents

Introduction	4
How AutoReplace works	4
Versions	4
Intended audience	5
Future plans	5
Changes from previous versions	6
New in version 1.1	6
Installation.....	6
Set up	8
Quick Start	8
The Plugin Manager	8
tb AutoReplace	10
Registration	10
Using AutoReplace to purchase a registration code	11
Purchasing AutoReplace using other methods.....	12
Lost registration codes	12
Re-registration after upgrading Lightroom	12
Settings.....	12
The search string	13
The Open Code File Manager button	14
The active code file list.....	14
Back up	15
Fields to process	16
Other controls.....	16
Documentation	17
Status	17
Plug-in Author Tools.....	17
Preset Manager	18
Debug	19
Acknowledgements.....	19
Code files.....	19
Creating code files outside Lightroom	19
The Code File Manager	21

Activating code files	21
Deactivating code files	22
Creating code files within Lightroom	22
Editing code files	23
Updates	24
Licensing.....	26
Troubleshooting	26
Is AutoReplace enabled?	26
Has AutoReplace finished initializing?	27
Is Lightroom busy?	27
Are you running a Trial version?	27
Getting more detailed information	28
Is AutoReplace using the correct settings?	28
How is AutoReplace processing a specific image?	29
Feedback	30
Appendix 1: Uninstallation.....	31

Introduction

How AutoReplace works

AutoReplace is a plug-in that runs in the background whilst you use Lightroom in your normal workflow. To use AutoReplace, you need to define three things:

1. The fields you want to search for replacement codes
2. The pattern by which replacement codes are identified
3. The text that you want to take the place of each replacement code

Once you have done this, AutoReplace will constantly scan the contents of the fields you have identified in step 1 and, every time it finds one of the codes defined by the pattern in step 2, it searches through the list of code and replacement pairs you defined in step 3 and replaces each code with the corresponding text. For example, you might type the following text in an images Caption field:

```
a1 \itb b2 during \match
```

and, with the correct definitions, AutoReplace will automatically change the text of the caption to

```
John SMITH of Newtown United is tackled by David BROWN of Anywhere Rovers during  
the Sponsor company's football league match between their two sides at the New-  
town Arena on March 22nd.
```

Configuration of AutoReplace is simple and intuitive, and can be done without leaving Lightroom.

Code replacement is recursive, without limit. For example, if you have the following set up

```
\lt      Leicester Tigers  
\ns      Northampton Saints  
\home    \lt  
\away    \ns  
\venue   Welford Road  
\comp    Aviva Premiership  
\event   during the \comp match between \home and \evt at \venue.
```

Then `\event` will eventually translate as `during the Aviva Premiership match between Leicester Tigers and Northampton Saints at Welford Road.`

Code/replacement pairs are defined in the order in which they are defined within a code file. Code files are processed in the order in which they appear in the Settings section of the management panel. There is no need to define a code/replacement pair before it is used in a recursive replacement. For example,

```
\home    \lt  
\lt      Leicester Tigers
```

is valid. However, if two or more code/replacement pairs share the same code, then the replacement text that is defined last is the one that will be used. AutoReplace does show a warning message in this case.

Versions

AutoReplace comes in two versions: trial and full. The trial version is fully functional and has no time limitation. The only restriction is that the trial version will recognise only a random selection of ten

code/replacement pairs defined by the code files you specify. In the full version, the number of code/replacement pairs is limited only by the capabilities of your computer.

A full licence for AutoReplace has no expiration date. You will be entitled to download and use all upgrades to the plug-in, including all future major releases, without limitation, subject to the terms of the original licence.

AutoReplace can be used in both Mac OS X and Microsoft Windows versions of Lightroom from 3 upwards. Your AutoReplace licence is tied to a combination of your email address and Lightroom serial number. If you change either (for example, through a major version upgrade of Lightroom), then you will need a new licence. If you need a new licence as a result of a Lightroom upgrade, I will provide you with a new licence key free of charge. Currently, if you require a new licence key as a result of a change of email address, I will also supply you with a new licence key free of charge. However, I reserve the right to introduce a small administrative charge in this situation in the future.

Intended audience

I wrote AutoReplace to help me in my work as a sports photographer. I think sports photography will be its main market.

But it's not the only one. For example, I also enjoy natural history photography. This is an area where accurate captioning is just as important as sports and other journalistic photography – albeit usually without the time pressures! I have a hopeless memory when it comes to scientific names, even for common species. So, one idea might be to create series of code files, one for each habitat or genus, perhaps.

For example, for Fowlmere RSBP reserve, I might have

```
\bs      Bewick swan (Cygnus columbianus)
\ge      Goldeneye (Bucephala clangula)
\rt      Red-throated diver (Gavia stellata)
```

and so on, whereas for my back garden, I'd need something more like

```
\gsw     Greater spotted woodpecker (Dendrocopos major)
\bt      Blue tit (Cyanistes caeruleus)
\gt      Great tit (Parus major)
\gf      Green finch (Carduelis chloris)
\bf      Bullfinch (Pyrrhula pyrrhula)
```

Future plans

I would like the development of AutoReplace to be driven by you, its users. If you can think of a useful addition to its capabilities, please do let me know. If you discover a problem with using AutoReplace in its current form, or can think of a way of making it easier to use, then once again, please do get in touch.

My future plans for AutoReplace already include

- An improved user interface. (I know it's not great at the moment – see Set up below for a few reasons why. My initial focus has been on the core functionality. Now that is working properly, I'll start to make things look prettier.)
- Integration with keywords
- Integration with IPTC fields
- Other features, as requested by users

Changes from previous versions

New in version 1.1

- Support for Lightroom 4 on Windows
- Support for code files using tab as well as comma as a delimiter. This should aid with the import of code files produced by other systems, such as codereplacements.com.

Installation

Installation of AutoReplace follows the standard model for Lightroom plug-ins.

Download AutoReplace and save the **AutoReplace.lrplug-in** file anywhere on your computer.

In Lightroom 3 and 4, the default location for plug-ins is defined as follows:

Mac OS	Current user	~/Library/Application Support/Adobe/Lightroom/Modules
	All users	/Library/Application Support/Adobe/Lightroom/Modules
Windows XP ¹		C:\Documents and Users\username\Application Data\Adobe\Lightroom\Modules
Windows Vista ¹ & Windows 7		C:\Users\username\AppData\Roaming\Adobe\Lightroom\Modules

Table 1: default plug-in locations

1: Not confirmed for Lightroom 4.

You are free to install AutoReplace anywhere on your computer. However, I recommend that you install AutoReplace in the default location. By doing so, you will be able to take advantage of the automated update and uninstallation facilities that AutoReplace provides.

1. Open Lightroom
2. Click the **File > Plug-in Manager** menu item
3. Click the **Add** button in the bottom left hand corner of the Plug-in Manager window

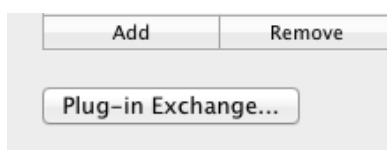


Figure 1: Adding a plug-in in the Plugin Manager

Navigate to the folder containing the **AutoReplace.lrplug-in** file, select it, and click on the **Add Plug-in** button.

Also, you will only be able to do a complete uninstall of AutoReplace (including the deletion of all plug-in specific settings) if you install the plug-in in the default user specific plug-in folder. On the Mac, this is ~/Library/Application Support/Adobe/Lightroom/Modules and on Windows 7, C:\Users\username\AppData\Roaming\Adobe\Lightroom\Modules.

. This is a limitation of the framework on which AutoReplace is built.

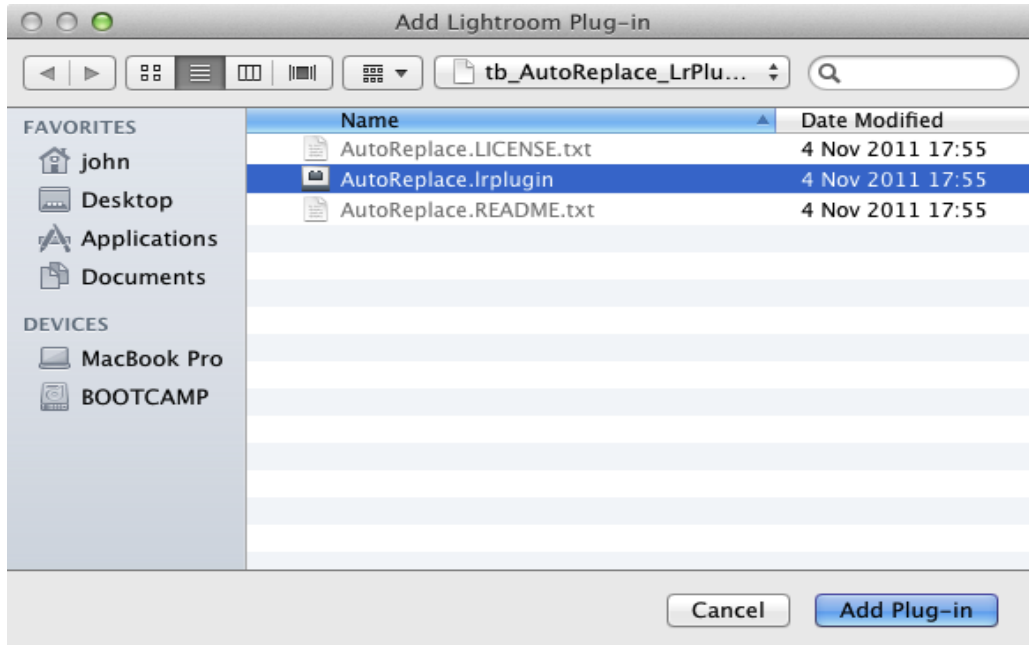


Figure 2: Adding the AutoReplace plug-in file to the Plug-in Manager

You should now see AutoReplace added to the list of Lightroom Plugins, with a small green dot glowing to the left of its entry, indicating that the plug-in is installed and running. If you see an red, amber or grey dot beside its entry, please see Troubleshooting on page 26 below.

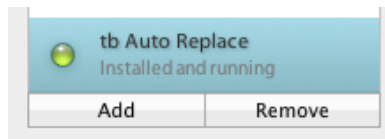


Figure 3: A green dot indicates that AutoReplace has been successfully installed

When you first install the Trial version of AutoReplace, you'll be asked to accept the terms of the EULA

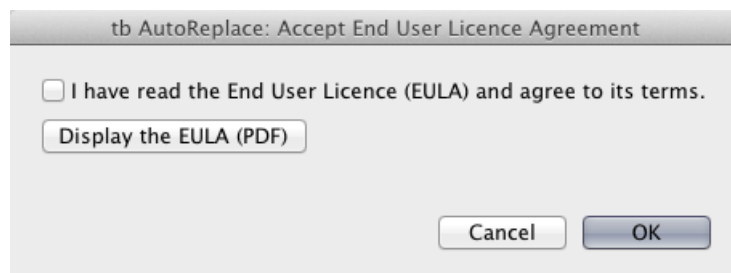


Figure 4 The EULA acceptance dialog

You will also see a nag screen reminding you that you are running a Trial version of the plug-in:

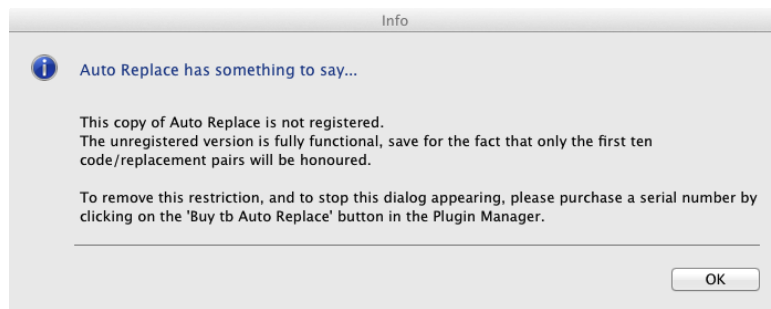


Figure 5: The "unregistered version" nag screen

This screen will appear every time AutoReplace starts and every time you change one of AutoReplace's parameters, for example, when you add or remove a code file.

The process of registering AutoReplace is described in Registration on page 10 below.

Set up

Quick Start

The remainder of this section describes each section of the AutoReplace plug-in manager in order and in detail. However, only a few sections are relevant for day-to-day use of the plug-in. If you want to get started quickly, here's what you need to do:

1. If you have a registration code, use it. [See on page 26 below.] If you don't, it's not a problem. You can use AutoReplace in trial mode, but only ten code replacement pairs will be recognized.
2. Create at least one code file, preferably in an external editor. Microsoft Excel, OpenOffice or a simple text file editor will do. [See Creating code files outside Lightroom on page 19 below.]
3. Activate the code files in the Code File Manager. [See Activating code files on page 21 below.]
4. Enable AutoReplace. [See Status on page 17 below.]

That's it. You're in business.

The Plugin Manager

It has to be said that the Lightroom plug-in user interface is limited and awkward. Whilst the interface can display a certain amount of dynamic information (that is, information which changes in response to user input), it is very difficult, if not impossible, to create an interface that is itself dynamic. Since the parameters to AutoReplace are very dynamic, the current user interface is clumsy to say the least. I am aware of this and, now that the core functionality of AutoReplace is in place, I will put more effort into improving the interface. However, it is unlikely to ever be perfect without a considerable upgrade to the Lightroom plug-in UI.

AutoReplace's status is described in the Plugin Manager dialog. The Plugin Manager is opened by selecting the **File > Plugin Manager...** menu item.

The Plugin Manager consists of two panels. On the left hand side, you'll find a list of plug-ins that Lightroom knows about. Scroll down the list until you find the entry for **tb AutoReplace**. (The plug-ins appear in alphabetic order.) Click on **tb AutoReplace** entry, and the AutoReplace management panel will appear on the right hand side of the dialog.



Figure 6: The AutoReplace management panel

The AutoReplace management panel consists of several sections:

Section	Description
tb Auto Replace	Gives a general description of the plug-in; provides links to the AutoReplace web-site for purchase, updates and support; allows access to AutoReplace log files for initial debugging
Registration	Records registration information; allows retrieval of lost registration codes; allows re-registration of AutoReplace following an upgrade to Lightroom itself.
Settings	The most important section of the management panel for day-to-day use. Allows the definition of code replacement pairs and all other aspects of AutoReplace's operation
Documentation	Provides links to this User Manual and your EULA.
Status	Allows the plug-in to be enabled or disabled. Also provides details of the plug-in's physical location, version number.
Plug-in Author Tools	Should you encounter an error whilst running AutoReplace, this is where you can save the error log before requesting support.
Preset Manager	Allows quick and easy switching between frequently used AutoReplace configurations.
Debug	Normally, you can ignore this section. However, if you run into a problem that is particularly difficult to track down, I may ask you to change a few settings in this section.
Acknowledgements	As it says, acknowledgements to those who have made significant contributions to the development of the plug-in.

Table 2: Summary of management panel sections

Each section can be expanded by clicking on the corresponding grey-shaded header, and is described in more detail in the following sections.

tb AutoReplace

The tb AutoReplace section of the management panel provides a link allowing you to buy the Full version of AutoReplace; check for updates and to install them; view log files produced by AutoReplace and control the level of detail they contain and finally, to uninstall AutoReplace.

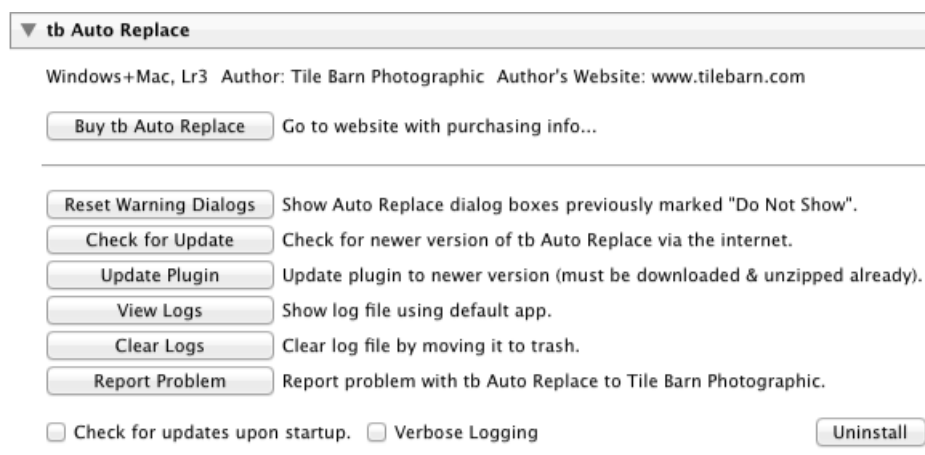


Figure 7: The tb AutoReplace section of the AutoReplace management panel

Buy tb AutoReplace	Takes you to the purchase page of the tilebarn.com website, where you may use PayPal to purchase a registration code for AutoReplace
Reset Warning Dialogs	Several dialogs in AutoReplace include a “Don’t show this to me again” option. If you’ve selected any of these options, clicking on this button will display them again.
Check for update	Queries the tilebarn.com website to see if there’s a newer version of AutoReplace available. AutoReplace can also check for updates automatically each time Lightroom starts if you click the Check for updates upon startup check box at the bottom of this section.
Update plug-in	Automatically installs an updated version of AutoReplace. For more details, see Updates on page 24 below.
View logs	Opens the AutoReplace log file in your default text file editor.
Clear logs	Deletes the AutoReplace log file.
Report problem	In the unlikely event that you run into a problem with AutoReplace, gives you a simple method to cut-and-paste (a section of) the Autoreplace log file into an email message so that I can resolve the problem for you.
Check for updates upon startup	Does what it says on the tin. Startup refers to Lightroom, not AutoReplace.
Verbose logging	Writes a detailed description of AutoReplace’s operation to the log file. <i>Note: verbose logging can result in very long log files. I recommend that you use this option only when trying to track down a problem.</i>
Uninstall	The uninstallation process is described in Appendix 1: Uninstallation on page 31 below.

Registration

If your copy of AutoReplace is unregistered, the Registration section of the AutoReplace management panel looks like this:

Figure 8: The Registration section of the AutoReplace management panel in “Unregistered” mode

*Note: There is a minor glitch with this section of the management panel at the moment. If you move directly from any of the text fields to either the **Register** or **Get licence key** buttons, the process will fail because AutoReplace will not detect the information in the text field you last used. The workaround is simple: click anywhere else on the on the management panel before clicking the button. Then everything will work as expected. I apologise for the inconvenience, and am working on a solution.*

Using AutoReplace to purchase a registration code

The easiest way to register AutoReplace is to click the **Buy tb AutoReplace** button in the section of the plug-in management panel. By doing this I will automatically obtain the information I need to provide you with your licence key, which will be sent to you by email (and which will be displayed on the order acknowledgement screen if you return to my website after completing your purchase on PayPal).

Once you receive your licence email, copy and paste your email address and registration code into the appropriate text fields and click the **Register** button. If all is well, you'll see a dialog confirming that AutoReplace is fully functional:

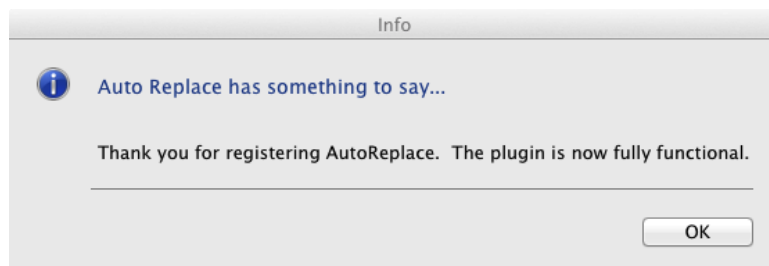


Figure 9: Acknowledging successful registration

If something has gone amiss, you'll see a message similar to the following:

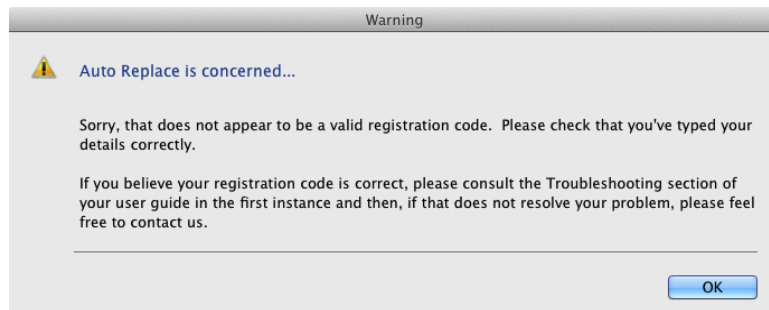


Figure 10: Reporting a registration problem

Please check your details and try again. You may find the Troubleshooting section of this document helpful. If you are certain your details are correct and your problems persist, please contact me.

Once your copy of AutoReplace has been successfully registered, the registration section of the management panel will look like this:

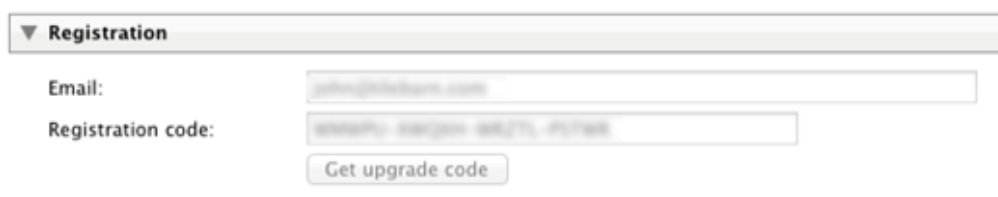
The image shows a web interface for the 'Registration' section. At the top is a header bar with a downward arrow and the word 'Registration'. Below this, there are two input fields. The first is labeled 'Email:' and contains the text 'john@phillip.com'. The second is labeled 'Registration code:' and contains a long alphanumeric string. Below the second input field is a button labeled 'Get upgrade code'.

Figure 11: The Registration section of the AutoReplace management panel after successful registration

Purchasing AutoReplace using other methods

If you didn't start the purchase process by clicking on the **Buy tb AutoReplace** button at the top of this section of the management panel, you won't have a registration code. (This might happen, for example, if you bought AutoReplace from one of my sales partners.) In this case, you can obtain your registration code by entering your email address and PayPal transaction id in the appropriate fields and then clicking the **Get Licence key** button. Your registration code will appear and a confirmation email will be sent to you.

As before, after successful registration, the Registration section of the management panel will look as it does in Figure 11 above.

Note: you can also use this method to retrieve your registration code if you ever lose your registration email.

Lost registration codes

If you have at least one of your email address, PayPal transaction id and registration code, I should be able to help you, but you will need to send me as much information as you can.

If you have lost all of your details, then I am afraid I will be unable to help you.

Re-registration after upgrading Lightroom

As I previously explained, your registration code is tied to your Lightroom serial number. If your Lightroom serial number changes, then so will your AutoReplace registration code. After a major version upgrade to Lightroom, click the **Get upgrade code** button to obtain your new registration code. I will provide this free of charge.

Note: A major version upgrade is from, say, Lightroom 3 to Lightroom 4. Upgrading a minor version upgrade – from, for example, Lightroom 3.4 to Lightroom 3.5 – does not require a new registration code.

Settings

The settings section is absolutely central to the plug-in's operation, this is the section of the management panel that you will visit most frequently from day to day. In its initial state, the settings section looks like this:

Settings

Status:
☐ Reset required?

Search string:

Code files:

Back up:

Fields to process:

<input checked="" type="checkbox"/> title	<input checked="" type="checkbox"/> caption	<input type="checkbox"/> headline
<input type="checkbox"/> label	<input type="checkbox"/> copyName	<input type="checkbox"/> creator
<input type="checkbox"/> creatorJobTitle	<input type="checkbox"/> creatorAddress	<input type="checkbox"/> creatorCity
<input type="checkbox"/> creatorStateProvince	<input type="checkbox"/> creatorPostalCode	<input type="checkbox"/> creatorCountry
<input type="checkbox"/> iptcSubjectCode	<input type="checkbox"/> creatorPhone	<input type="checkbox"/> creatorEmail
<input type="checkbox"/> creatorUrl	<input type="checkbox"/> descriptionWriter	<input type="checkbox"/> iptcCategory
<input type="checkbox"/> iptcOtherCategories	<input type="checkbox"/> dateCreated	<input type="checkbox"/> intellectualGenre
<input type="checkbox"/> scene	<input type="checkbox"/> location	<input type="checkbox"/> city
<input type="checkbox"/> stateProvince	<input type="checkbox"/> country	<input type="checkbox"/> isoCountryCode
<input type="checkbox"/> jobIdentifier	<input type="checkbox"/> instructions	<input type="checkbox"/> provider
<input type="checkbox"/> source	<input type="checkbox"/> copyright	<input type="checkbox"/> rightsUsageTerms
<input type="checkbox"/> copyrightInfoUrl	<input type="checkbox"/> colorNameForLabel	<input type="checkbox"/> personShown
<input type="checkbox"/> nameOfOrgShown	<input type="checkbox"/> codeOfOrgShown	<input type="checkbox"/> event
<input type="checkbox"/> additionalModelInfo	<input type="checkbox"/> modelAge	<input type="checkbox"/> minorModelAge
<input type="checkbox"/> modelReleaseStatus	<input type="checkbox"/> modelReleaseID	<input type="checkbox"/> sourceType
<input type="checkbox"/> propertyReleaseID	<input type="checkbox"/> propertyReleaseStatus	

Figure 12: The settings section of the AutoReplace management panel in its initial state

The search string

The search string is the most difficult of the inputs to AutoReplace to explain. Fortunately, it is the one that you are least likely to need to change. As the name suggests, the search pattern is a pattern - rather than a fixed string - that AutoReplace uses to scan the words of the selected fields.

Note: AutoReplace regards a word as a contiguous string of letters and numbers, delimited by either (a) another character (such as a punctuation mark or whitespace), (b) the start of the text or (c) the end of the text.

When it finds a string that matches the pattern, AutoReplace then searches its code files for an exact match to the string it has located. If it finds an exact match, it replaces the code text with the replacement text it found in its code files. Technically speaking, the search pattern is a regular expression. By default, its value is

`\?%w+`

which translates as “an contiguous group of one or more alphanumeric characters, optionally starting with a backslash, terminated by the next character that is not an alphanumeric character”. An alphanumeric character is any of the lower case letters “a” through “z”, any of the upper case characters “A” through “Z” and the digits 0 through 9¹. So the text on each of the following lines will match the default pattern

¹ The search is locale-aware, so accented and other special characters will be matched if the locale is set appropriately on your computer.

n10

x5

\itb

xxx

So why is the backslash there? Quite simply, it doesn't have to be. But it is useful for two reasons:

- It helps to prevent accidental replacements. I'm happy to assume that any set of letters immediately followed by a number (eg "n13") is not something that I'm going to want to type in normal circumstances, so it's probably something that I want replaced. But I'm not so sure about normal words. For example, if I type "itb", did I really mean to type "it" or "its", or did I mean it to be a code for the replacement text "is tackled by"? That, I'm not so sure of.
- It helps prevent unintended recursion. AutoReplace's code replacements are recursive. It's most unlikely that you'll ever want a backslash to appear in a caption, so providing the option to prefix codes with a backslash helps prevent unwanted recursion.

I wanted a single keystroke character that I'd rarely, if ever, want to type into a metadata without an ulterior motive. There aren't many choices, and I settled on "\".

Of course, you're at liberty to make your own choices and choose your own lead-in character, or to do away with it all together. However, if you do so, you'll need to understand regular expressions, and to remember that the backslash character has a special meaning in Lua (the language in which Lightroom plugins are written) and therefore needs to be escaped.

That level of detail is beyond the scope of this user guide, but you can find the relevant information at <http://lua-users.org/wiki/PatternsTutorial> and many other sites on the web.

The Open Code File Manager button

The function of the code file manager is explained in The Code File Manager below.

The active code file list

When one or more code files have been activated, the active code files are listed below the **Open Code File Manager** button:

Settings

Status:
☐ Reset required?

Search string:

Code files:
Codefiles/actions.csv
Codefiles/Rugby Union/Leicester Tigers.csv
Codefiles/Rugby Union/London Irish.csv

Back up

Fields to process:

<input checked="" type="checkbox"/> title	<input checked="" type="checkbox"/> caption	<input type="checkbox"/> headline
<input type="checkbox"/> label	<input type="checkbox"/> copyName	<input type="checkbox"/> creator
<input type="checkbox"/> creatorJobTitle	<input type="checkbox"/> creatorAddress	<input type="checkbox"/> creatorCity
<input type="checkbox"/> creatorStateProvince	<input type="checkbox"/> creatorPostalCode	<input type="checkbox"/> creatorCountry
<input type="checkbox"/> iptcSubjectCode	<input type="checkbox"/> creatorPhone	<input type="checkbox"/> creatorEmail
<input type="checkbox"/> creatorUrl	<input type="checkbox"/> descriptionWriter	<input type="checkbox"/> iptcCategory
<input type="checkbox"/> iptcOtherCategories	<input type="checkbox"/> dateCreated	<input type="checkbox"/> intellectualGenre
<input type="checkbox"/> scene	<input type="checkbox"/> location	<input type="checkbox"/> city
<input type="checkbox"/> stateProvince	<input type="checkbox"/> country	<input type="checkbox"/> isoCountryCode
<input type="checkbox"/> jobIdentifier	<input type="checkbox"/> instructions	<input type="checkbox"/> provider
<input type="checkbox"/> source	<input type="checkbox"/> copyright	<input type="checkbox"/> rightsUsageTerms
<input type="checkbox"/> copyrightInfoUrl	<input type="checkbox"/> colorNameForLabel	<input type="checkbox"/> personShown
<input type="checkbox"/> nameOfOrgShown	<input type="checkbox"/> codeOfOrgShown	<input type="checkbox"/> event
<input type="checkbox"/> additionalModelInfo	<input type="checkbox"/> modelAge	<input type="checkbox"/> minorModelAge
<input type="checkbox"/> modelReleaseStatus	<input type="checkbox"/> modelReleaseID	<input type="checkbox"/> sourceType
<input type="checkbox"/> propertyReleaseID	<input type="checkbox"/> propertyReleaseStatus	

Figure 13: The Settings section, showing three active code files

As you might expect, clicking the **Edit externally** button alongside each code file will open your default external editor to allow you to make changes to the file.

Note: If you edit a code file externally, you'll need to check the Reset required? Checkbox before AutoReplace will recognize the changes.

Back up

You can take a back up of all code files in the default code file folder at any time. Simply click on the **Export...** button and select the destination folder. If the destination folder isn't empty, or if an existing file will be overwritten by the back up, you'll be asked to confirm your decision. When the backup is complete, you'll be told how many code files were backed up. If any errors occurred during the process, you'll be told about that too.

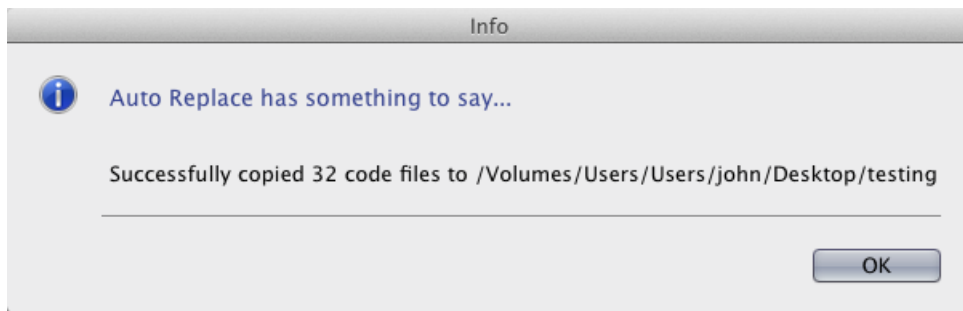


Figure 14: Confirming a successful code file back up

Clicking the **Import...** button reverses the process.

Question: I've included this feature primarily as a workaround to help get round the problem of the failing auto-update process. Once auto-update is working, will it be worth keeping backup available, or is it then redundant?

Fields to process

The EXIF and IPTC fields that AutoReplace is currently monitoring for codes are listed under Fields to process. The monitored fields may be changed by simply checking the boxes to the left of the metadata fields that you wish to monitor and uncheck the others.

Fields to process:

<input checked="" type="checkbox"/> title	<input checked="" type="checkbox"/> caption	<input type="checkbox"/> headline
<input type="checkbox"/> label	<input type="checkbox"/> copyName	<input type="checkbox"/> creator
<input type="checkbox"/> creatorJobTitle	<input type="checkbox"/> creatorAddress	<input type="checkbox"/> creatorCity
<input type="checkbox"/> creatorStateProvince	<input type="checkbox"/> creatorPostalCode	<input type="checkbox"/> creatorCountry
<input type="checkbox"/> iptcSubjectCode	<input type="checkbox"/> creatorPhone	<input type="checkbox"/> creatorEmail
<input type="checkbox"/> creatorUrl	<input type="checkbox"/> descriptionWriter	<input type="checkbox"/> iptcCategory
<input type="checkbox"/> iptcOtherCategories	<input type="checkbox"/> dateCreated	<input type="checkbox"/> intellectualGenre
<input type="checkbox"/> scene	<input type="checkbox"/> location	<input type="checkbox"/> city
<input type="checkbox"/> stateProvince	<input type="checkbox"/> country	<input type="checkbox"/> isoCountryCode
<input type="checkbox"/> jobIdentifier	<input type="checkbox"/> instructions	<input type="checkbox"/> provider
<input type="checkbox"/> source	<input type="checkbox"/> copyright	<input type="checkbox"/> rightsUsageTerms
<input type="checkbox"/> copyrightInfoUrl	<input type="checkbox"/> colorNameForLabel	<input type="checkbox"/> personShown
<input type="checkbox"/> nameOfOrgShown	<input type="checkbox"/> codeOfOrgShown	<input type="checkbox"/> event
<input type="checkbox"/> additionalModelInfo	<input type="checkbox"/> modelAge	<input type="checkbox"/> minorModelAge
<input type="checkbox"/> modelReleaseStatus	<input type="checkbox"/> modelReleaseID	<input type="checkbox"/> sourceType
<input type="checkbox"/> propertyReleaseID	<input type="checkbox"/> propertyReleaseStatus	

Figure 15: The Fields to process section of the Settings tab of the Plug-in Manager

Figure 15 shows the default fields to process: title and caption.

Other controls

The other two controls are less critical. The **Status** field shows you what AutoReplace is doing. Normally, the field will read **running**. When AutoReplace first starts, it will read **starting**. If the plug-in is disabled, it will read ***** Plugin disabled**. You cannot edit this field.

On very rare occasions, you may need to force AutoReplace to restart. (Typically this will be to update the code/replacement list after editing a code file externally or, rarely, to check that the correct code files are being loaded when debugging a problem after turning verbose logging on.) You can do this by checking the **Reset required?** checkbox. After a few seconds, the checkbox will clear and the **Status** field will reflect the new state of the plug-in.

Documentation



Figure 16: The Documentation section of the AutoReplace management panel

Clicking on the **User Guide (PDF)** button to display this User Guide. Click on the **End User License Agreement (PDF)** button to display the EULA. In either case, you'll need to have Adobe Acrobat Reader or Adobe Acrobat installed to open the file. Adobe Acrobat Reader is free and can be downloaded from the Adobe website.

Status

The Status section of the plug-in manager is primarily informational.

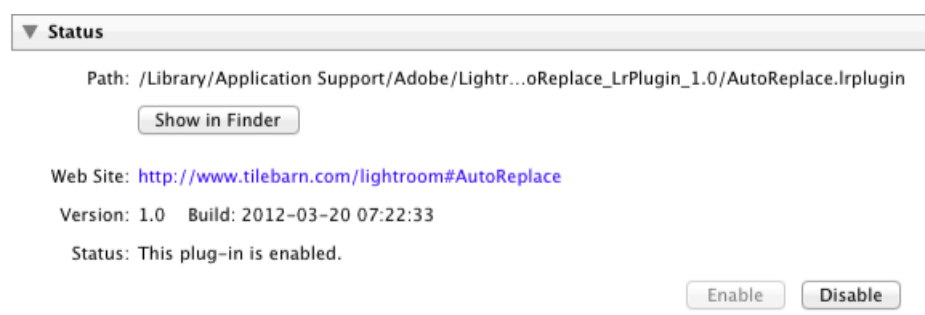


Figure 17: The Status section of the AutoReplace management panel

However, two items are practically relevant: the **Enable** and **Disable** buttons will, unsurprisingly, enable or disable the plug-in. If AutoReplace isn't making any code replacements at all, this is your first port of call.

Note: When the Status section isn't expanded, the section header will still show whether or not the plug-in is enabled. See Figure 6 above for an example.

The **Show in Finder** button will open a window displaying the contents of the folder in which the plug-in files are found. This is probably the quickest way of getting to the default code file folder from within Lightroom. Mac users will need to right-click and select "Show package contents" to see the files within the plug-in folder.

Plug-in Author Tools

The Plug-in Author Tools section is helpful only in the case of a problem, so hopefully, you'll never need it.

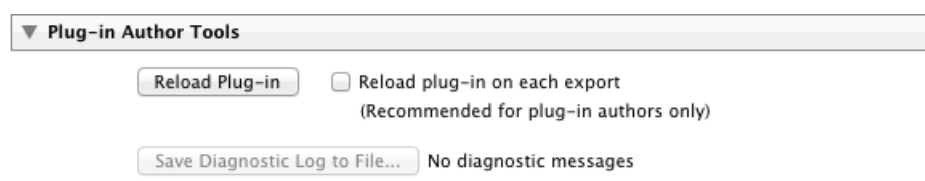


Figure 18: The Plug-in Author Tools section of the management panel

If AutoReplace falls over with a fatal error, the number of error messages will appear here and the **Save Diagnostic Log to File...** button will be enabled. If you find yourself in this situation, please save

the diagnostic log (it's a simple text file) and send it to me with a description of what you were doing at the time. This will help me find a solution for you.

The **Reload Plug-in** button simulates Lightroom being started from scratch. This differs from AutoReplace's "reset required" in that resetting the plug-in simply reloads the active code files. I can't think of a situation where reloading AutoReplace would be helpful in normal circumstances. But if you can think of an example, please let me know.

Preset Manager

The Preset Manager section of the management panel is common to all plug-ins built with Rob Cole's Elare framework. It allows you to save frequently configurations so that they can be selected with a single click of the mouse rather than a circuitous journey around all the plug-in's options.

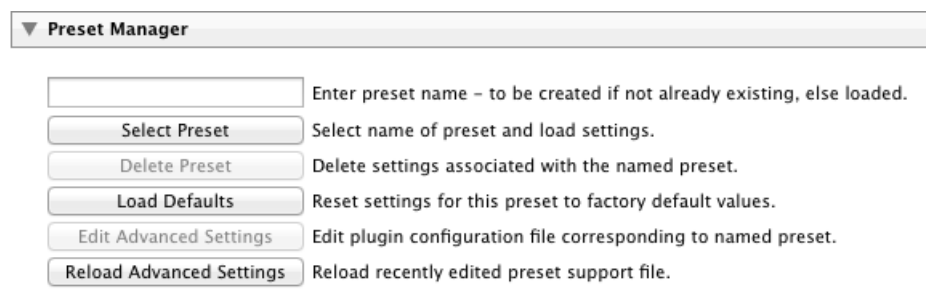


Figure 19: The preset Manager section of the AutoReplace management panel

So, if you had, say, one set of code files that you always use with one sport and a complete different set that you use with another, you could define one preset with each, and then easily switch between them.

To save your current settings as a preset, simply type a name in the text filed at the top of the section. The name is arbitrary and any keyboard characters are permitted.

To change to an existing preset, click on the **Select Preset** button, select the required preset from the combo box that appears and click the **OK** button.

To delete the current preset, you won't be surprised to learn that you need to click on the **Delete Preset** button.

Note: Deleting the current preset doesn't alter your current settings. Nor does it delete any code files associated with the preset.

To return to the "straight-out-of-the-box" state of AutoReplace, click the **Load Defaults** button. This will result in the following settings:

Search pattern	\?w+
Fields to process	Title, Caption
Active code files	None

The **Edit/Reload Advanced Settings** buttons open the currently selected settings file in your default text file editor. You're welcome to do this if you wish, but I wouldn't recommend it...

Debug

Access to the Debug section of the plug-in manager is only necessary when investigating bugs that are particularly hard to track down. If this is necessary, I will provide detailed, personalized, instructions.

Acknowledgements

The acknowledgements section is self explanatory.

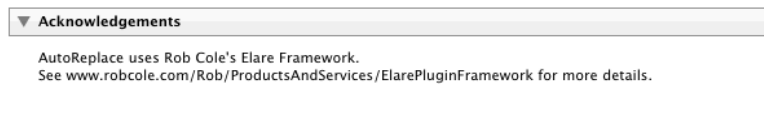


Figure 20: The Acknowledgements section of the AutoReplace management panel

Code files

The limitations of the Lightroom plug-in UI are most evident in the definition of code files. Currently, I recommend that code files are created outside of Lightroom as CSV files, most probably in a spreadsheet program. However, the management of existing code files is relatively straight-forward within the Lightroom plug-in UI.

Creating code files outside Lightroom

The screenshots in this section have been taken from OpenOffice. Other spreadsheet programs, such as Microsoft Excel, will work just as well.

Note: spreadsheet programs appear to be particularly sensitive to whitespace at the beginning of fields. You should avoid it.

The structure of a AutoReplace code file is very simple: each code/replacement pair is defined on a single line. The code and replacement texts are separated by a delimiter. Currently, the permitted delimiters are commas and tabs. An individual line within a code file must use either comma or tab as its delimiter, but you may freely switch between the two on different lines within the same file. For example

```
"t1","John Smith"
```

defines a code replacement pair in which every instance of **t1** will be replaced with **John Smith**.

A delimiter at the end of the replacement text is optional. If AutoReplace finds a tab anywhere on the line, it uses tab as the delimiter for that line. Otherwise, it uses the comma.

Note: spreadsheet programs appear to be particularly sensitive to whitespace at the beginning of fields. You should avoid it. For example, if the line in the example above had read "t1", "John Smith" then the replacement text would be "John Smith" instead of John Smith. This is not a problem with text editors.

Although it is not essential, I recommend that both the code and the replacement texts are enclosed in either single or double quotes. To reduce the possibility of error, I suggest using double quotes to avoid confusion with an apostrophe within the replacement text.

The number of code/replacement pairs in a code file is unlimited. However, due to the current restrictions of the Lightroom plug-in UI, I suggest limiting the number of codes within a single file to twenty-five or fewer. The number of code files that AutoReplace can handle at any one time is essentially unlimited.

Here is a screenshot of a code file being edited in a spreadsheet program.

	A	B
1	c15	Lee BYRNE of ASM Clermont Auvergne
2	c14	Sitiveni SIVIVATU of ASM Clermont Auvergne
3	c13	Regan KING of ASM Clermont Auvergne
4	c12	Wesley FOFANA of ASM Clermont Auvergne

Figure 21: Editing a code file in OpenOffice

In this case, if, for example, the text **c15** is entered in monitored field, it will be replaced by **Geordan Murphy of Leicester Tigers**.

Hint: If a squad list is cut and pasted from a team website into a spreadsheet program, the squad list will almost certainly be in the required format.

To save the code file in the required format, ensure that you select csv, Comma Separated Variable or similar as the file format when saving the code file.

To save the code file in OpenOffice, select the **File > Save as...** menu item and select **Text csv (.csv)** as the value in the file type combo box, as shown below.

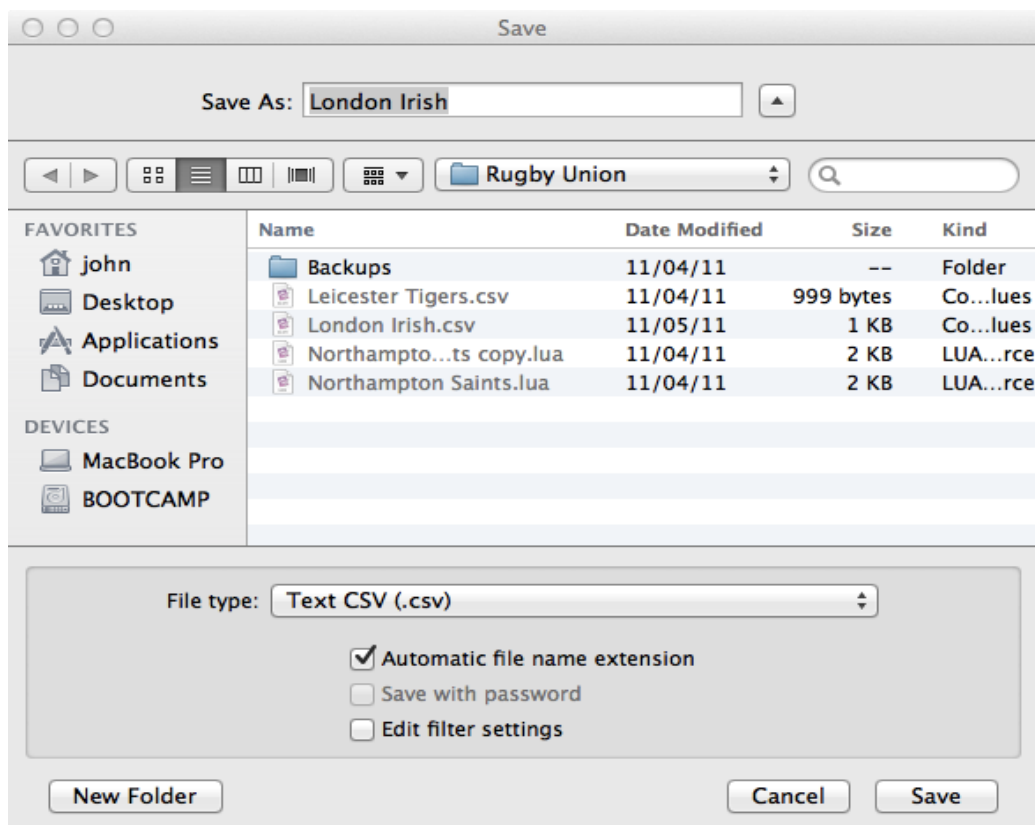


Figure 22: Saving a CSV file using OpenOffice

*Note: the default location in which code files are saved is in the **CodeFiles** folder within the **AutoReplace** plug-in. However, they can be saved anywhere on any disk that is available to the current user.*

*Note: When using Mac OS X, you must select the **AutoReplace.lrpugin** bundle, right click and select **Show package contents** from the pop-up menu that is displayed if you wish to explore the **CodeFiles** folder and its contents.*

The Code File Manager

Efficient management of code files is the key to successful use of AutoReplace. You may define as many code files as you wish, and may choose which of them, if any, are currently active.

You can display the Code File Manager by clicking on the **Open Code File Manager** button on the AutoReplace management panel.

The Code File Manager dialog will be displayed. The Code File Manager shows the currently active code files, as well as their contents. The content of each file is displayed in a separate tab.

The first time you use the Code File Manager, it looks like this:

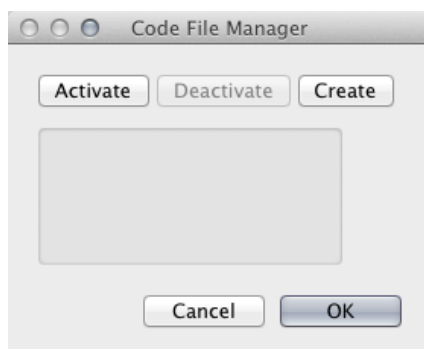


Figure 23: The Code File Manager in its initial state

Activating code files

To activate an existing code file, click the **Activate** button in the top left hand corner of the Code File Manager. This will display a File Open dialog. Browse to the code file you wish to add, and click **OK**.

AutoReplace will display a message informing you that the file has been added, and that its contents may be viewed when the Code File Manager is next opened.

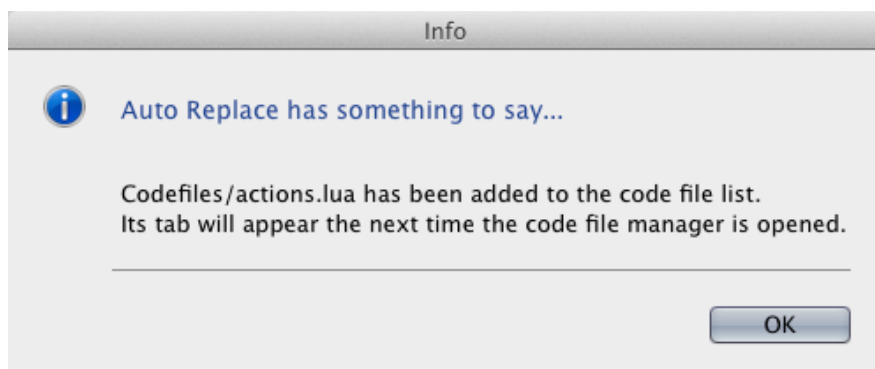


Figure 24: Confirmation that a code file has been activated

Note: This is one of the unfortunate restrictions of the Lightroom Plug-in UI: the controls that appear on a dialog cannot be changed once the dialog has been displayed. As Lightroom doesn't know about the code file you wish to add when it constructs the Code File Manager, it can't display the code file once you have added it. It's awkward but unavoidable.

Note: You may select multiple code files in the File Open dialog. All the files selected will be activated.

Here's an example of what the Code File Manager looks like once some code files have been activated:

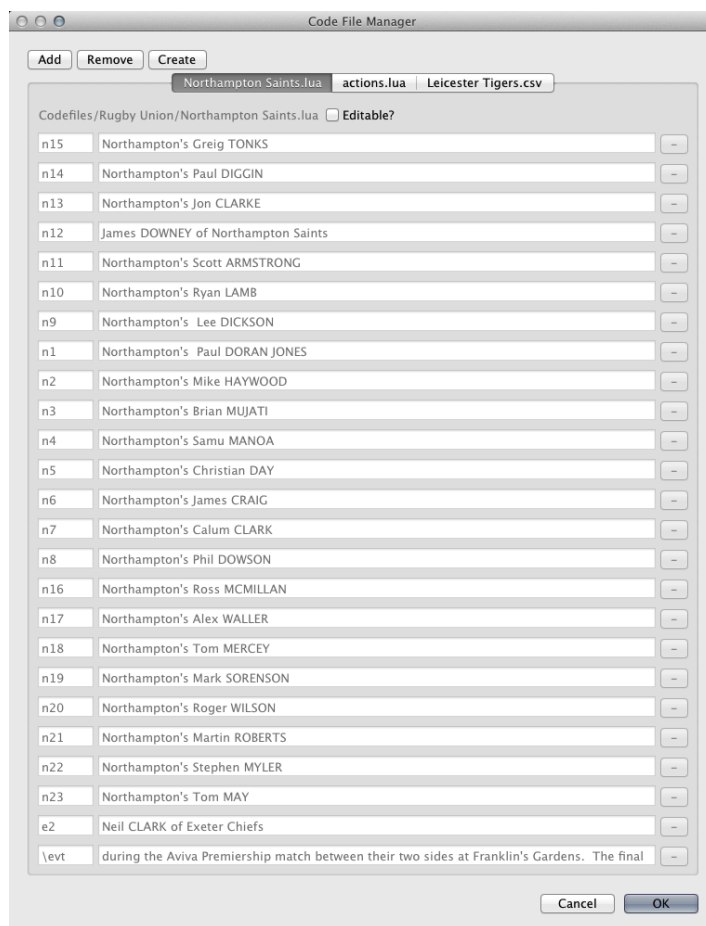


Figure 25: The Code File Manager after some code files have been activated

Deactivating code files

To deactivate a code file, select the corresponding tab and click the **Deactivate** button in the top left hand corner of the Code File Manager. The code file will be deactivated immediately, but once again, the limitations of the Lightroom plug-in UI mean that the changes will not be visible immediately. A dialog confirms the deactivation of the code file:



Figure 26: Confirming deactivation of a code file

Creating code files within Lightroom

Code files can be created within the Code File Manager but, once again, the limitations of the Lightroom UI make the process awkward. The recommended way of creating a code file is to use a text editor or spreadsheet program, as described in above. However, if you wish to create a code file within Lightroom, click on the **Create** button in the top left hand corner of the Code File Manager. A dialog will appear and you will

be asked to provide a name for the new code file, and the number of code/replacement pairs you want it to contain:

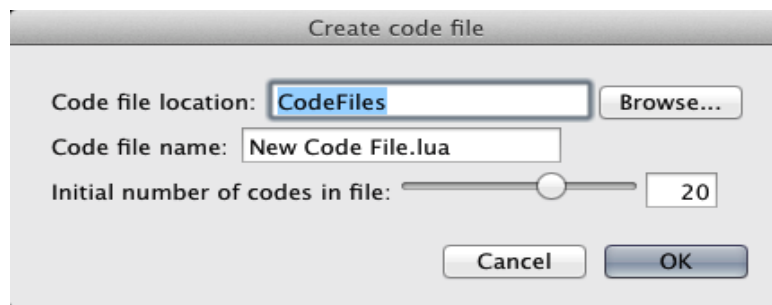


Figure 27: The Create code file dialog

If you click the **OK** button, a dialog will appear confirming that an empty code file has been created.

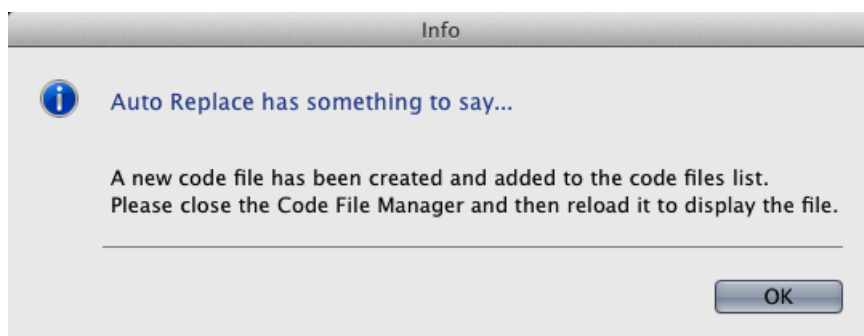


Figure 28: Confirming creation of a new code file

You should now close the Code File Manager and re-open it. The new, empty, code file will appear in a tab in the Code File Manager as it is redisplayed. You may now edit the new code file as for any other code file, as described in below.

Editing code files

To prevent accidental damage to code files, the Code File Manager displays them in read-only mode by default. To allow a code file to be edited, click the **Editable?** checkbox in the top right hand corner of the code file's tab.

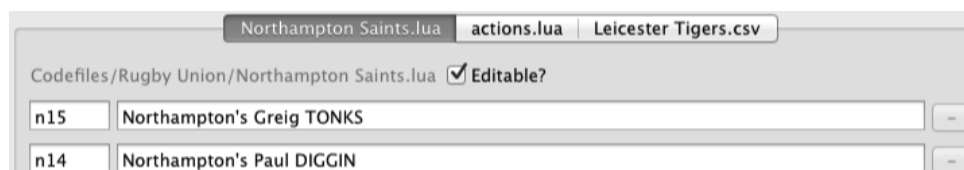


Figure 29: The Editable? checkbox on a code file tab

The codes and replacement texts contained in the file may now be edited. To save your changes, click on the **OK** button in the bottom right hand corner of the Code File Manager. Any changes that you have made are immediately written to the code files and made available to the AutoReplace plug-in.

Note: There is currently no way of deleting existing code/replacement pairs or of adding new pairs within Lightroom. To add or remove code/replacement pairs, you will need to edit the code file outside of Lightroom. All that can be done within the code file editor at the present time is that existing code pairs can be modified. This may change in the future.

A backup copy of the code file is created before the changes are saved. A dialog box tells you where the back up has been saved.

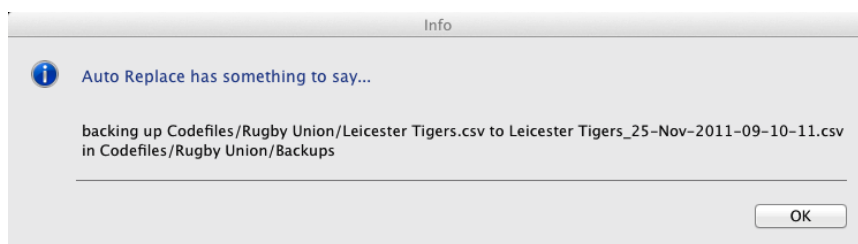


Figure 30: Confirming the backup of a code file

*Note: by default, the backup copy is saved in the **Backup** folder under the code file's parent folder, with the name `<codefile>_dd-mm-yyyy-hh-mm-ss.csv`, where `<codefile>` is the original name of the code file and `dd-mm-yyyy-hh-mm-ss` is the current date and time. If the **backup** folder does not already exist, it will be created. This location cannot currently be changed.*

To abandon your changes, click the **Cancel** button.

Updates

Once you've bought an AutoReplace registration code, all updates will be free for the lifetime of the product.

AutoReplace will check for updates automatically every time it starts up if you check the Check for updates on startup checkbox in the tb AutoReplace section of the management panel. If an update is available, you'll be prompted to download and install it.

You can also force an update check by loading the AutoReplace window in the plug-in manager and clicking on the **Check for update** button.

Note: the remainder of this section assumes that you have installed AutoReplace in the default Modules folder for Lightroom Plug-ins. If you have installed the plug-in elsewhere, you should manually uninstall the old version and then manually install the new update.

Once an update has been downloaded, it should be installed by clicking on the **Update Plug-in** button on the AutoReplace window of the Plug-in Manager.

Note: if you use the default folder for storing your code files, it is vital that you take a back up copy before upgrading AutoReplace. The upgrade process deletes all code files without warning. This behavior will be changed in a future release.

The process works like this:

You'll be prompted to browse to the folder to which you have downloaded and unzipped the new version of the plugin:

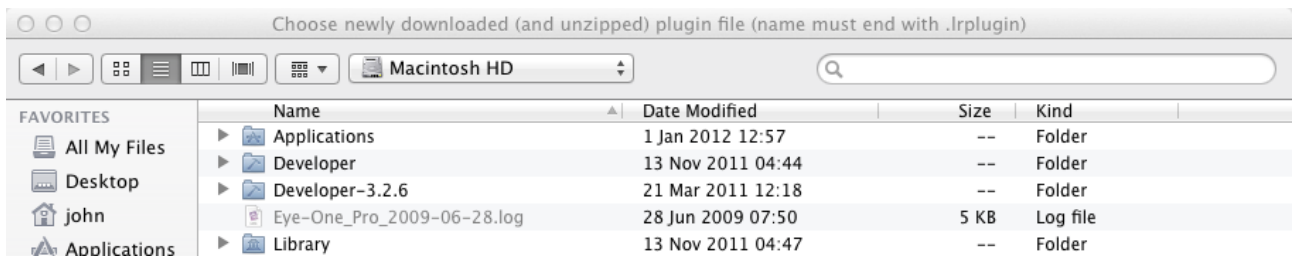


Figure 31: Part of the upgrade selection dialog

Once you click on OK, you'll see a standard progress bar. You may need to wait a few seconds for the upgrade to start, but don't worry, once it does, it runs very quickly: the progress bar rarely has time to report any progress before the update is complete.

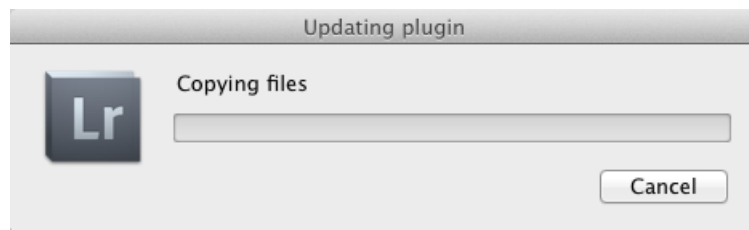


Figure 32: The Update plug-in progress dialog

When the update has completed, you'll see a dialog which reports the location of the log file that describes what happened during the update...

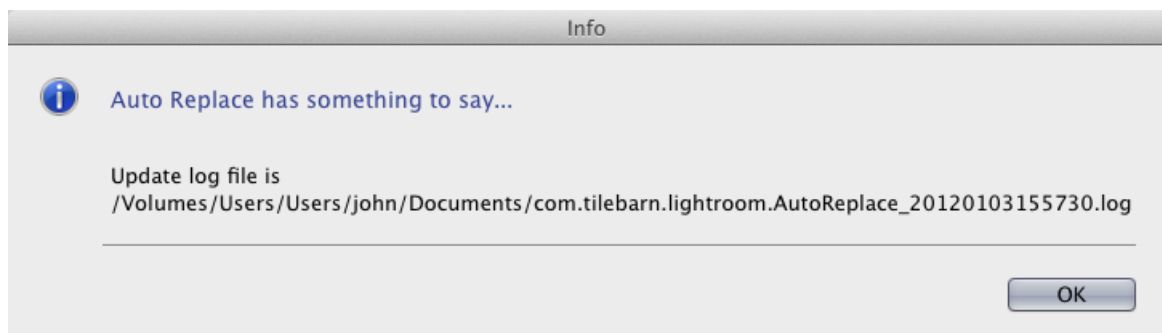


Figure 33: The update log file

...and then confirmation that the update has succeeded.

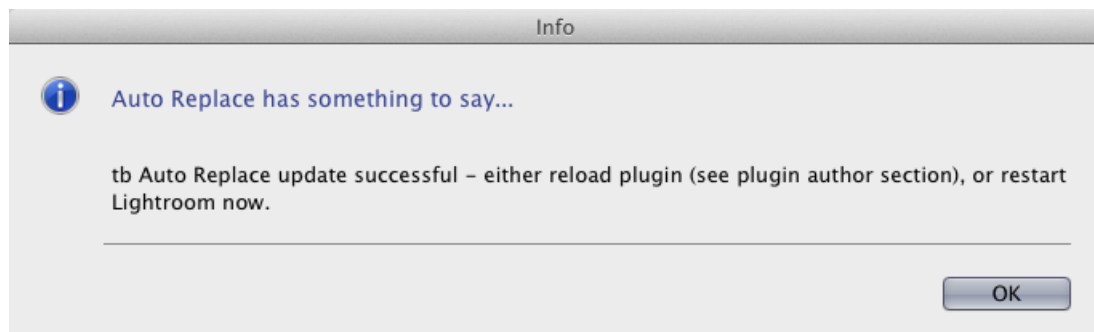


Figure 34: Confirmation of a successful update

Licensing

The process of obtaining a licence key for AutoReplace is described in Registration above.

A full AutoReplace licence is tied to your Lightroom serial number and to your email address. You may therefore install the AutoReplace plug-in on as many computers as share the same Lightroom serial number. You will, however, need to use the same email address when registering.

An obvious consequence of this policy is that you will need a new licence key for AutoReplace whenever you upgrade your copy of Lightroom. I will supply all such replacement licence keys free of charge. To obtain an upgrade key, simply click on the **Get upgrade code** button in the Plugin Manager and follow the on-screen instructions.

The **Get upgrade code** button is enabled only if you have a full version of AutoReplace and the version of Lightroom that you are currently running is more recent than the version you were running when you purchased (or last upgraded) AutoReplace.

Note: One upgrade code will be provided for each combination of AutoReplace licence key, Lightroom serial number and Lightroom version.

Troubleshooting

You may find that AutoReplace isn't working as you expected. This section is intended to help you track down exactly what's gone wrong.

The first thing to try to decide is whether or not AutoReplace isn't detecting *all of the codes* you've defined or *just some of them*. If it's just some of them, then you know that AutoReplace is at least running, and the problem is with your code file set up. If the former, you need to make sure that AutoReplace is actually running.

Is AutoReplace enabled?

The simplest way to see if AutoReplace is running is to check the Status section of the plug-in management panel. Open the Plugin Manager (menu item **File > Plug-in Manager...**) and select tb Auto Replace in the left hand panel.

Find the Status section. If it's expanded, look at the last line of text. It should read either **Status: This plug-in is enabled** or **Status: This plug-in is currently disabled**.

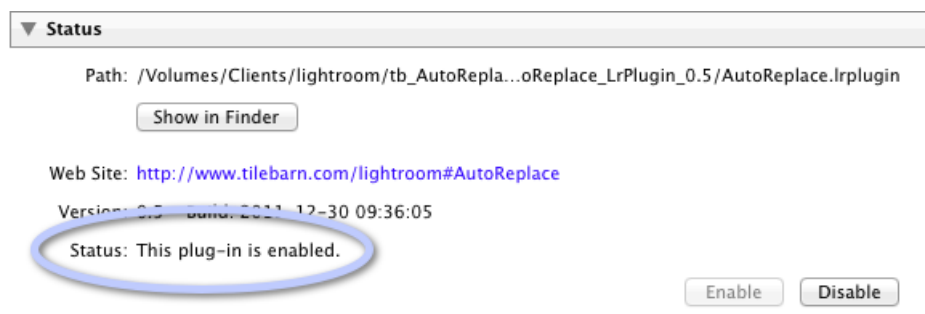


Figure 35: Checking if AutoReplace is enabled when the Status section of the management panel is expanded

If the Status section isn't expanded, the plug-in's status is reported in the right hand side of the section banner.



Figure 36: Checking if AutoReplace is enabled when the Status section of the management panel is collapsed

If the plug-in is disabled, expand the status section of the plug-in management panel (if you haven't done so already) and click the **Enable** button.

Has AutoReplace finished initializing?

Look at the top left hand corner of the main Lightroom window. If you see the AutoReplace Starting Up message in, AutoReplace isn't yet ready. You'll just need to wait a few seconds. See Is Lightroom busy? below for more details.



Figure 37: The AutoReplace initialisation message

Is Lightroom busy?

AutoReplace runs as a background process. This means it operates only when Lightroom has time to spare. Usually, because humans work so slowly compared to a computer's CPU, this is effectively instantly and all the time. However, on occasion, this may not be the case. Typically, this will be when Lightroom has just started up or when a very large number of new images are being ingested, or perhaps when some other operation that involves intensive CPU activity is being performed.

Unfortunately, there is no way to alter the priority that Lightroom assigns to its various activities, so when this situation arises, there is nothing to do but wait until Lightroom has finished whatever it is doing. Luckily, the codes you type won't go away. All that needs to be done is to revisit the photos you've edited once Lightroom is less busy. The code replacements will then be made in the usual way.

My own personal experience is that this happens occasionally when Lightroom first starts up. I've never had AutoReplace "hang" once it has started to work. The longest I've had to wait for the first edit to take place on start up has been around ninety seconds., but the delay is usually much less than this – five to ten seconds or so.

Are you running a Trial version?

The trial version of AutoReplace will honour only ten code replacement pairs. The pairs it chooses are arbitrary. A warning message will be printed in the log file.

```

2012-01-04 13:23:07 +0000, INFO Plugin is not registered. Replacement texts limited to:
2012-01-04 13:23:07 +0000, INFO (table)
[t13] = (string) Horacio Agulla of Leicester Tigers
[t3] = (string) Martin Castrogiovanni of Leicester Tigers
[c18] = (string) Daniel KOTZE of ASM Clermont Auvergne
[c15] = (string) Lee BYRNE of ASM Clermont Auvergne
[t7] = (string) Julian Salvi of Leicester Tigers
[c901] = (string) Alexandre AUDEBERT of ASM Clermont Auvergne
[t17] = (string) Boris Stankovich of Leicester Tigers
[t9] = (string) Sam Harrison of Leicester Tigers
[c14] = (string) Sitiveni SIVIVATU of ASM Clermont Auvergne
[c19] = (string) Nathan HINES of ASM Clermont Auvergne

```

Figure 38: The trial version of AutoReplace will only accept ten code/replacement pairs

To enable all your code/replacement pairs to be recognized, you will need to upgrade to the Full version.

Getting more detailed information

If the suggestions above haven't solved your problem, you probably need more detailed information about what AutoReplace is trying to do. The best way to do this is to turn verbose logging on and take a look at the log file. It's probably also worth restarting AutoReplace so that you can check that it is initializing correctly. Clearing the log file before you restart AutoReplace will reduce the amount of output you need to wade through.

To turn verbose logging on, check the **Verbose Logging** check box at the bottom of the tb Auto Replace section of the management panel.

To clear the log file, click the **Clear Logs** button, also in the tb Auto Replace section of the management panel.

To view the log file, you won't be surprised to learn that you need to click on the **View Logs** button in the same section.

The tb Auto Replace section of the management panel is described in detail on page 10 of this guide.

The remainder of this section assumes that you have verbose logging enabled.

Is AutoReplace using the correct settings?

Open the log file and take a look at the top of the file. Search for the line

```
INFO Starting to reset process parameters...
```

It's about twenty-five to forty lines from the top. Immediately following this line, AutoReplace prints the current values of its `fieldsToProcess` and `searchString` parameters:

```

2011-12-30 11:10:05 +0000, INFO Starting to reset process parameters...
2011-12-30 11:10:05 +0000, DEBUG fieldsToProcess:
2011-12-30 11:10:05 +0000, DEBUG title
2011-12-30 11:10:05 +0000, DEBUG caption
2011-12-30 11:10:05 +0000, DEBUG searchPattern: \?%w+

```

Figure 39: Current values of the `fieldsToProcess` and `searchString` parameters

If either of these two values is incorrect, fix it. They are both defined in the Settings section of the management panel, which is described on page 12 of this guide.

Next, AutoReplace reports the number of code files it is using and, for each file in turn, its absolute location and every code replacement pair it finds in each. This can be a quite lengthy report!

```
2011-12-30 11:10:05 +0000, INFO Beginning to process 3 code files...
2011-12-30 11:10:05 +0000, DEBUG In readCodeFile: Codefiles/actions.csv
2011-12-30 11:10:05 +0000, DEBUG [Absolute path: /Volumes/Clients/lightroom/tb_AutoRepl
2011-12-30 11:10:05 +0000, DEBUG (table)
    [1] = (string) "otb"
    [2] = (string) "on the ball"

2011-12-30 11:10:05 +0000, DEBUG (table)
    [1] = (string) "ota"
    [2] = (string) "on the attack"
```

Figure 40: The start of a detailed code file report

If the active code files aren't the ones you were expecting, you can fix the problem using the Code File Manager, which is described starting on page 21 of this guide. If the code files are correct, but the code replacement pairs aren't, you'll need to edit their contents. You can use the Code File Manager to do this if you wish (see page 23), but I recommend using an external editor because of the clunky nature of the Lightroom plug-in UI. Don't forget to force a reset if you take the latter option.

How is AutoReplace processing a specific image?

Select the image that's giving you problems in Lightroom's library module. Make the changes to the meta-data that you think should be working, making sure that you remove the focus from the last metadata field that you edit. Open the log file and scroll down to the bottom. Look for the name of the file you've just edited.

AutoReplace will list exactly how it has handled each field in the fieldsToProcess list: it will print out the initial value of each field, and then either report that it found no placeholders or the edited value of the field having changed the placeholders it did find. Figure 41: Detailed reporting of a recursive code replacement below shows an example involving a two stage replacement. (I have added some line breaks manually to improve readability.)

```
2011-12-30 13:01:14 +0000, DEBUG 'caption' has initial value '17.12.2011. Leicester, England.'.
2011-12-30 13:01:14 +0000, DEBUG No placeholders found. No changes made.
2011-12-30 13:01:14 +0000, DEBUG Processing TigersClermont_20111217_134435_2264.jpg...
2011-12-30 13:01:14 +0000, DEBUG 'title' has initial value ''.
2011-12-30 13:01:14 +0000, DEBUG No placeholders found. No changes made.
2011-12-30 13:01:14 +0000, DEBUG 'caption' has initial value '17.12.2011. Leicester, England. c12 itb t15 \evt.'.
2011-12-30 13:01:14 +0000, INFO TigersClermont_20111217_134435_2264.jpg: caption is now '17.12.2011. Leicester, England. Wesley FOFANA of
ASM Clermont Auvergne is tackled by Geordan Murphy of Leicester Tigers during the \comp match between \ht and \vt at \venue.'.
2011-12-30 13:01:15 +0000, DEBUG Processing TigersClermont_20111217_134435_2264.jpg...
2011-12-30 13:01:15 +0000, DEBUG 'title' has initial value ''.
2011-12-30 13:01:15 +0000, DEBUG No placeholders found. No changes made.
2011-12-30 13:01:15 +0000, DEBUG 'caption' has initial value '17.12.2011. Leicester, England. Wesley FOFANA of ASM Clermont Auvergne
is tackled by Geordan Murphy of Leicester Tigers during the \comp match between \ht and \vt at \venue.'.
2011-12-30 13:01:15 +0000, INFO TigersClermont_20111217_134435_2264.jpg: caption is now '17.12.2011. Leicester, England. Wesley FOFANA
of ASM Clermont Auvergne is tackled by Geordan Murphy of Leicester Tigers during the Heineken Cup match between
Leicester Tigers and ASM Clermont Auvergne at Welford Road.'.
2011-12-30 13:01:15 +0000, DEBUG Processing TigersClermont_20111217_134435_2264.jpg...
2011-12-30 13:01:15 +0000, DEBUG 'title' has initial value ''.
2011-12-30 13:01:15 +0000, DEBUG No placeholders found. No changes made.
2011-12-30 13:01:15 +0000, DEBUG 'caption' has initial value '17.12.2011. Leicester, England. Wesley FOFANA of ASM Clermont Auvergne
is tackled by Geordan Murphv of Leicester Tigers during the Heineken Cup match between Leicester Tigers and ASM Clermont Auvergne at Welford Road.'.
```

Figure 41: Detailed reporting of a recursive code replacement

Close examination of verbose log file should enable you to identify where things are going wrong, although it is hard to give any more general guidance. In my experience, the most likely reasons for a problem are

- I'm using the wrong code files

- AutoReplace hasn't finished initializing
- I've made a typo in a code file
- I've accidentally changed the search pattern

Feedback

If you find a problem with the AutoReplace plug-in or this guide, please let me know. Equally, if you think of a way that I can improve the plug-in, feel free to make suggestions – I'm always happy to hear your ideas for improvements or additional functionality.

You can reach me either via my website (www.tilebarn.com/contact.php) or the **Report Problem** button in the tb Auto Replace section of the management panel.

John Kirkpatrick

April 2012

Appendix 1: Uninstallation

If you have installed AutoReplace in the default Modules folder, you can use the **Uninstall** button in the tb AutoReplace section of the management panel. Otherwise, you will need to remove the plug-in manually by clicking on the remove plug-in in the bottom left-hand corner of the Plug-in Manager. The advantage of using the **Uninstall** button is that this will also allow you to delete all of AutoReplace's preferences and settings if you so wish.

If you haven't installed AutoReplace in the default plug-ins folder, when you click on the **Uninstall** button, you'll be told that this won't work for you:

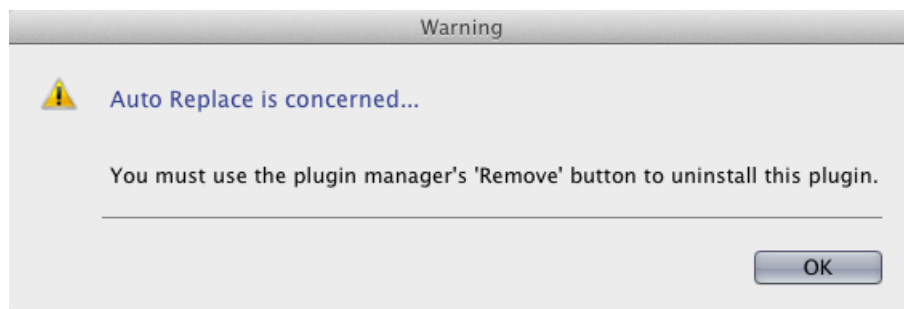


Figure 42: Unable to uninstall

Otherwise, you'll be asked to confirm that you really want to remove the plug-in:

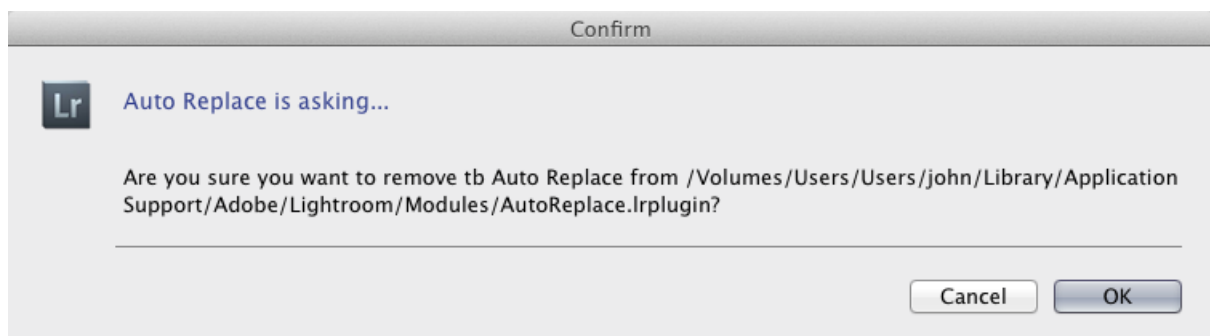


Figure 43: Confirmation of removal

And then what you want to do with AutoReplace's preferences and settings:

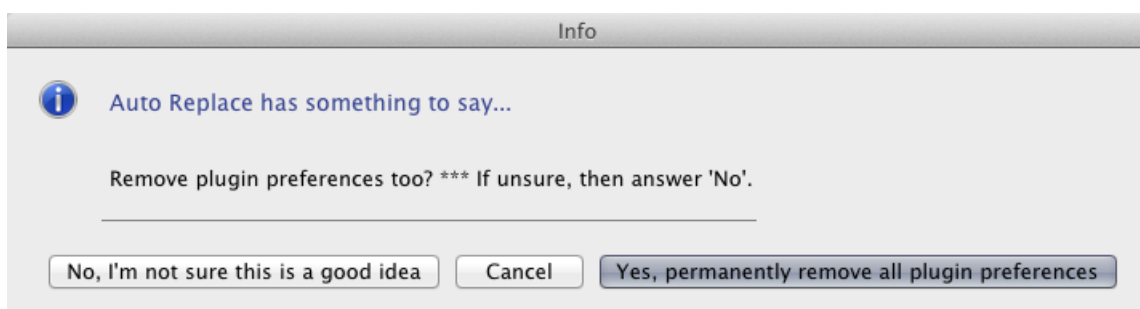


Figure 44: Confirm removal of preferences

If you answer **Yes...**, all preferences will be removed: this includes your licence key. Finally, you'll see confirmation that the plug-in has been removed.

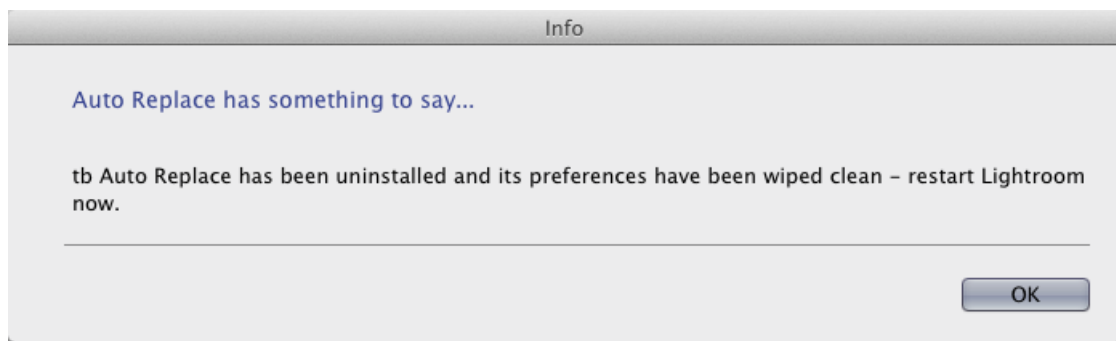


Figure 45: Confirmation that AutoReplace has been uninstalled