

AutoCopy

A Photographer's Utility

User Guide

Version 1.4

Tile Barn Photographic

www.tilebarn.com

Last updated: January 2013

Contents

Introduction	3
Versions.....	3
Intended audience	3
Changes from previous versions.....	3
Version 1.3.....	3
Installation.....	3
Using AutoCopy	3
Set up	5
The Monitoring panel	5
The Destination panel	6
The Source panel	6
The Logging panel	7
Updates	8
Licensing.....	8
Making a donation	8
Feedback	10

Introduction

Versions

Intended audience

I created AutoCopy as the result of a “wouldn’t it be nice if...” conversation with another sports photographer. Sports photographers are constantly swapping cards in and out of cameras and laptops whilst the event they are covering is going on. Getting the right image to the right place quickly and reliably is critical. There are other, more technological ways of doing what AutoCopy does, but they are also expensive. AutoCopy is a cheap and simple solution.

I’m sure there will be other areas in which AutoCopy will be useful. If you find one, please let me know.

Changes from previous versions

Version 1.4

- Following user feedback, added an option to automatically eject the card after processing. This avoids OS X’s prissy “Disk not properly ejected” message. The feature only works on OS X, but the issue doesn’t exist on Windows, so this shouldn’t be a problem.

Version 1.3

- When hot-swapping a memory card several times during a single session, AutoCopy was unable to track images which had previously been copied to the destination folder and then moved subsequently moved elsewhere, for example by the Lightroom auto import facility. AutoCopy version 1.3 introduces the source on duplicate options, described in more detail below. Consequently:
- The Files panel has been renamed the Source panel.
- The on duplicate option found in earlier versions is now in the Destination panel.

Installation

Installing AutoCopy is straightforward: simply copy AutoCopy.jar and the lib folder to a convenient location. To run, double click AutoCopy.jar, create a short cut, or any other convenient means of access the file.

To uninstall, simply delete the AutoCopy.jar and lib folder.

On Windows systems, AutoCopy uses the registry to store its settings. These are not removed when you delete the application.

Using AutoCopy

When you first install the Trial version of AutoCopy, you’ll be asked to accept the terms of the EULA



Figure 1 The EULA acceptance dialog

You can display the EULA by clicking on the **Show EULA** button. Once you have checked the **I have read the EULA and agree to its terms and conditions** check box, you can click the **I agree** button to close the dialog and start AutoCopy. If you click the **I do not agree** button, AutoCopy will exit.

Your acceptance of the EUAL will be acknowledged:

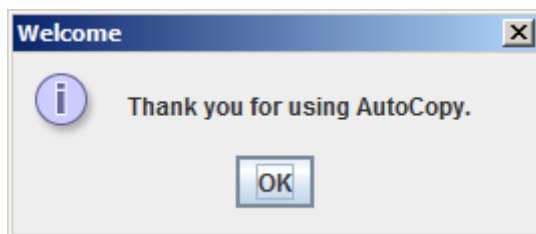


Figure 2: Acknowledging acceptance of the EULA

You will also see a nag screen reminding you that you are running donationware software:

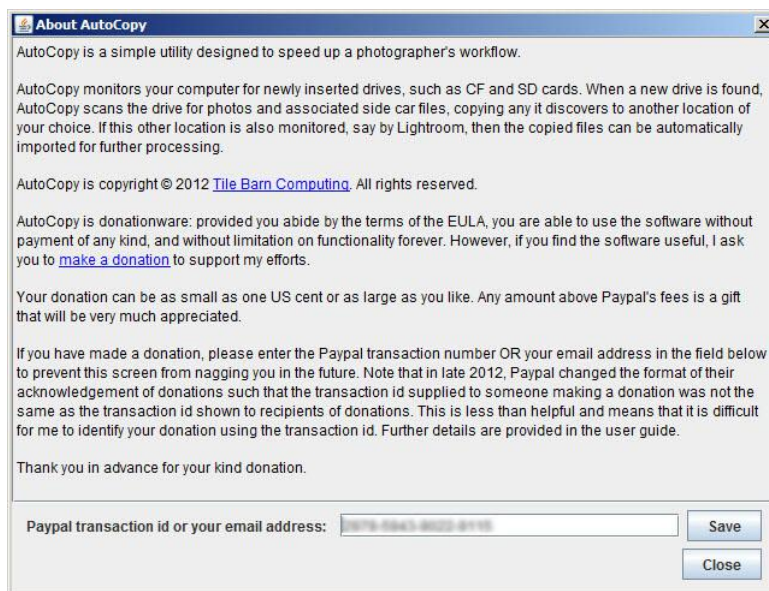


Figure 3: The AutoCopy About Box

This screen will appear every time AutoCopy starts until you have made a donation and entered the corresponding email address or Paypal receipt number.

The process of registering AutoCopy is described in Licensing on page 8 below .

Set up

AutoCopy is ready to run straight “out of the box”.

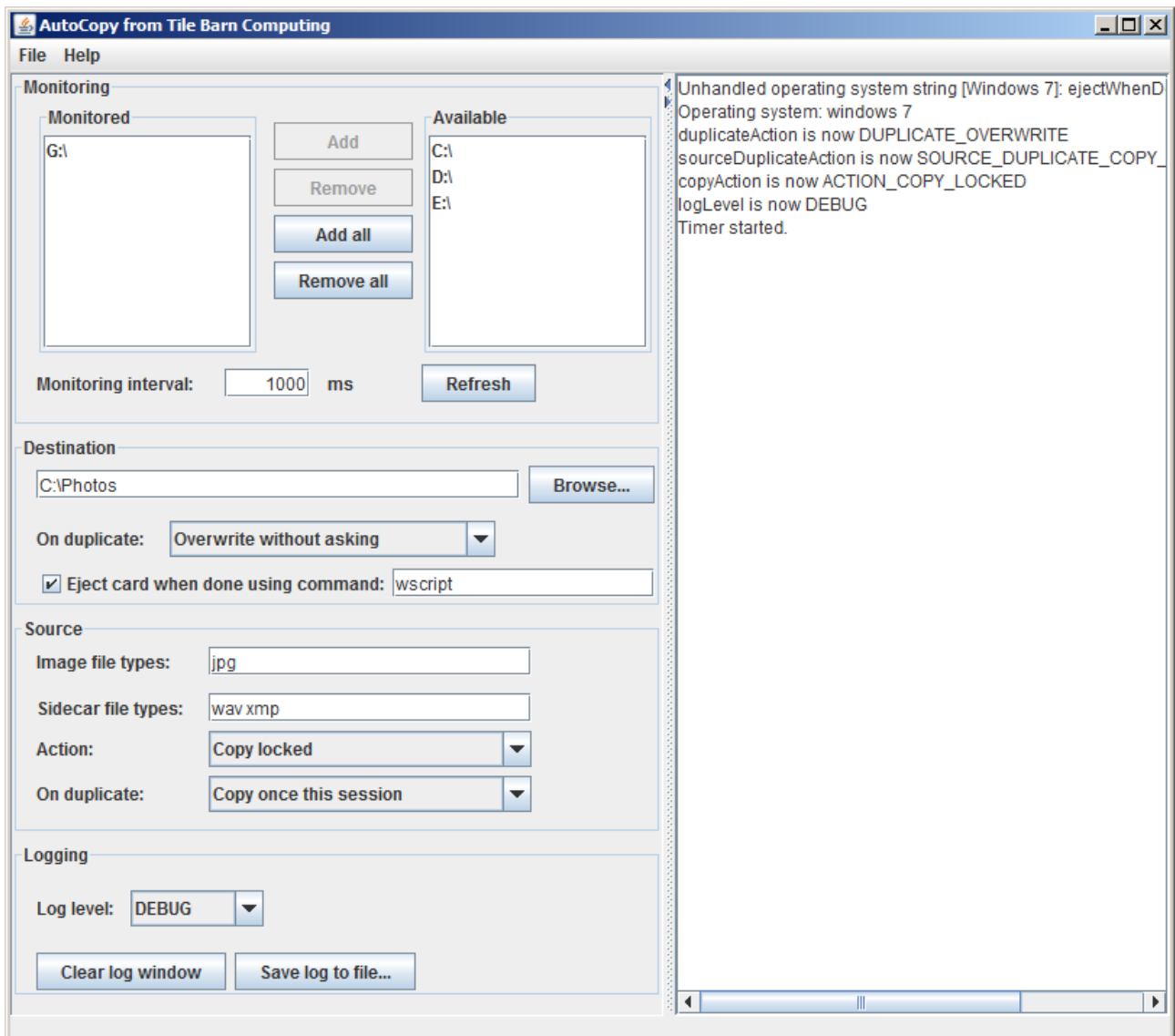


Figure 4: The main AutoCopy screen

The main AutoCopy screen is divided into two parts. The left hand side of the screen contains the control panel. The right hand side of the screen contains a log window, where AutoCopy reports changes to its settings and actions it has taken.

All of AutoCopy’s settings are persistent: any changes you make will be remembered the next time you run the program.

The Monitoring panel

The monitoring panel defines the drives that AutoCopy is currently monitoring. The list of available drives will contain the drives that AutoCopy discovered during start up. The list of monitored drives will contain the list of drives that were being monitored the last time the program was run, whether or not they are still mounted. (The first time you use AutoCopy, the list of monitored drives will be empty.)

If you add a drive that you want to monitor after AutoCopy has started, simply click the **Refresh** button. The new drive will appear in the available drives list.

You can add and remove drives from the list of monitored drives using the **Add**, **Remove**, **Add all** and **Remove all** buttons in the obvious way.

Note: use the Add all button with caution. AutoCopy makes no distinction between permanent and removable drives. Scanning your system disk for images is likely to be time consuming.

AutoCopy checks for new drives at intervals defined by the **Monitoring interval** text field. You may edit the length of the interval at will, though the duration of the interval is approximate, depending on how busy the system is on other tasks.

By default, AutoCopy will set the destination file to the value of your system's **user.dir** property.

The Destination panel

The destination panel is used to define the folder to which image files on monitored drives will be copied. You may change the destination folder either by typing the folder name directly into the text field, or by clicking on the **Browse...** button, which will display a standard file selection dialog.

On duplicate defines how AutoCopy will deal with name clashes in the destination folder. Possible values are:

- Skip without asking
- Overwrite without asking
- Automatically resolve clashes
- Ask me

These options are hopefully self-explanatory.

The algorithm that AutoCopy uses to resolve clashes is as follows:

If the file name is of the form **<filestem>-<x>.<extension>**, where **<x>** is an integer, increment **<x>** until the clash is resolved. Otherwise, rename the file to **<filestem>-1.<extension>**.

The default *On duplicate* value is Skip without asking.

If the Eject card when done using command: check box is selected, AutoCopy will attempt to eject the card once scanning has been completed. Do not change the text in the associate text field unless requested to do so by me. Thank you.

Note: Currently, this option is effective only on OS X. Windows users will see a warning note on the first line of the log window each time AutoCopy starts. (See Figure 4 above for an example.)

The Source panel

The files panel defines which files are copied, and the way in which AutoCopy handles name clashes. Use the controls on this panel as follows:

Image file types: enter the extensions of files that you want to copy here. Do not enter the leading dot. By default, AutoCopy will copy only JPEG files, but raw files can be handled just as easily. For example, entering `jpg crw cr2` will copy both JPEG files and Canon proprietary raw files.

Sidecar file types: enter the extensions of files that you want to consider as sidecar files here. Do not enter the leading dot. By default, AutoCopy considers wav and xmp files as sidecar files.

Note: AutoCopy handles image and sidecar files differently. Image files are always copied (provided they meet the criteria defined in the Source panel). Sidecar files are copied only if they are associated with an image file that will be copied. A sidecar file is associated with an image file if it shares the same file name but has a different extension. For example, image01.wav is a sidecar file associated with image01.jpg, but image02.xmp is not.

Action defines which image files are to be copied. Possible values are:

Copy all	All image files are copied
Copy locked	Only locked (read only) image files are copied
Copy unlocked	Only unlocked (read/write) image files are copied

The default action is Copy locked.

On duplicate defines how AutoCopy should respond on discovering a file in the source folder which it has already processed. Possible values are:

Always copy	Repeated files are always copied.
Copy once this session	Each file is copied once per AutoCopy session. If a file is detected on the memory card for a second time during the same AutoCopy session, it is ignored. The “known files” list is flushed at the start of each AutoCopy session.
Copy once ever	Each file is only ever copied once. If a file is detected on the memory card for a second time, even during a different AutoCopy session, it is ignored. The “known files” list is never flushed.
Ask me	If a file is detected for a second or subsequent time during an AutoCopy session, the user is prompted for a decision. The prompt appears each time the file is detected. The “known files” list is flushed at the start of each AutoCopy session.

The default option is Copy once this session.

The Logging panel

The Logging panel defines how AutoCopy reports its operations.

The **Log level** combo box controls the amount of detail that AutoCopy displays. **ALL** is the most detailed, **OFF** suppresses all output. Any value may be selected, although in practice only **DEBUG**, **INFO** and **ERROR** are used. The default value is **INFO**.

Unsurprisingly, the **Clear log window** button clears the contents of the log window and the **Save log to file...** button opens a file save dialog to save the contents of the log window to a file.

Updates

Updates will be posted on my website from time to time. I am not currently planning to add additional functionality, though I will consider doing so if there is sufficient interest. I will, of course, attempt to fix any bugs that are discovered.

All updates will be free for the lifetime of the product, regardless of whether or not you have made a donation.

AutoCopy automatically checks for updates every time the program starts. If one is found, a message will be written to the log window, provided the selected detail level is **INFO** or greater .

You can also check for updates manually using the **Help > Check for updates . . .** menu item as shown in the figures below.

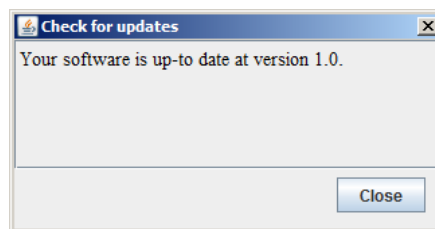


Figure 5: Update check - nothing to do

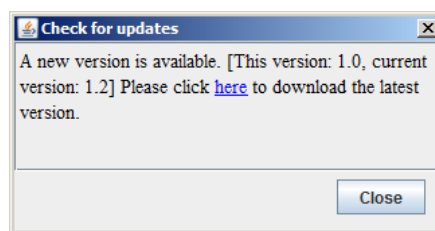


Figure 6: Update check - new version available

To update AutoCopy, simply copy the new files over your existing installation.

Licensing

The AutoCopy licence is simple. Provided you honour the EULA, you may use AutoCopy wherever you want to do whatever you want without payment of any kind.

To remove the startup nag screen you must make a donation. The size of the donation is entirely down to you. I trust you to make a fair assessment of AutoCopy's value to you (and your business). Each donation will hide the nag screen on a single installation of AutoCopy.

Making a donation

Click on the make a donation link on the About Box that is displayed when you start AutoCopy. (Alternatively, you may select the **Help > About . . .** menu item.) Complete the donation process. When you receive your confirmation email from Paypal, look for your transaction id in the email you receive from me:

Dear John,

We have received your donation of [REDACTED] in recognition of our work in developing AutoCopy.

Thank you. It's good to know our work is appreciated.

Please save a link to our website. Product news, updates and help will be posted there.

For future reference, your Paypal transaction id is 4GS3814805518983V.
Thank you for your custom.

Yours sincerely,
John Kirkpatrick

Figure 7: Your Paypal transaction in my acknowledgement email

In late 2012, Paypal changed the format of their acknowledgement of a donation so that the Transaction ID they supply to those making a donation was no longer the same as the transaction ID they supply to those receiving a donation. This is monumentally unhelpful – not to mention confusing! And consequently, it means that if you try to use the transaction ID you get from Paypal, it won't work...

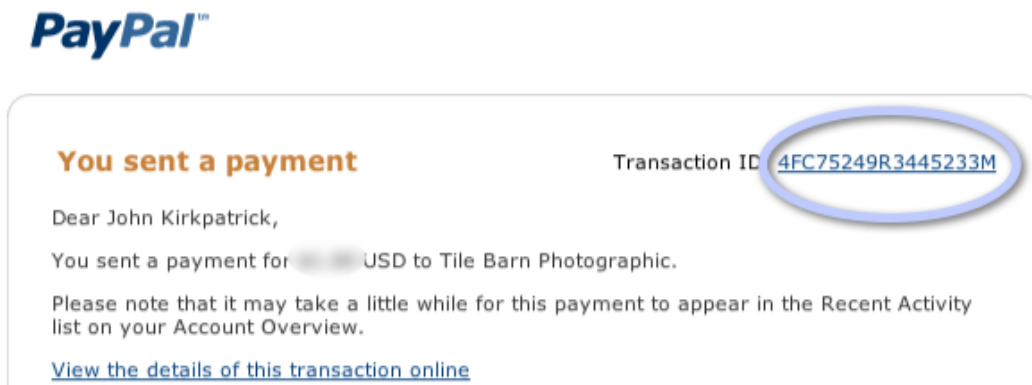


Figure 8: The Paypal transaction id in your Paypal email: this won't work

As a temporary work around, I've modified the AutoCopy registration process so that you can enter your email address rather than Paypal transaction ID to register your donation. This will work provided you've made only a single donation for AutoCopy. If you've made multiple donations to register AutoCopy on multiple machines, you'll have to use the transaction ID that I send you. I'm sorry for the inconvenience, but the problem is out of my control.

Feedback

If you find a problem with the AutoCopy or this guide, please let me know. Equally, if you think of a way that I can improve the software, feel free to make suggestions – I'm always happy to hear your ideas.

You can reach me via my website (www.tilebarn.com/contact.php).

John Kirkpatrick

December 2012